

Up market bathtub quality and design



prodi.gg

VARSOVIA FREE-STANDING BATHTUB

PBIB012-XXX-XX

- Appealing retro style design
- High quality fabrication
- Quality and endurance of materials

Retro style free-standing double ended claw foot bathtub. Big size. Material: enameled cast-iron bathtub with cast iron feet. Thickness of the white porcelain enamel: 1.5-2.0mm (inside). Hand smoothed painted exterior. Dimensions: 1850*770*745mm. Weight: 192kg.

Retro style free-standing double ended claw foot bathtub:

- White enamel thickness (inside): 1.5-2.0mm
- Total thickness: 8mm
- Cast iron adjustable (1,5cm) feet available in several colours : L 35cm
- Hand smoothed painted exterior available in several colours.
- Dimensions: 1850*770*745mm. Weight: 192kg
- Capacity: 285L

Remark:

- The tapware is not included.



COLOUR RANGE

◆ Painted exterior colour options:

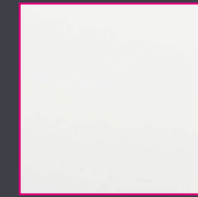
- **White** (Code: PBIB012-WHI-XX)
- **Black** (Code: PBIB012-BLA-XX)
- **Grey** (Code: PBIB012-GRE-XX)
- **Gold** (Code: PBIB012-GOL-XX)

◆ Bathtub feet colour options:

- **Chrome** (Code: PBIB012-XXX-CH)
- **White** (Code: PBIB012-XXX-WH)
- **Black** (Code: PBIB012-XXX-BK)
- **Nickel polished** (Code: PBIB012-XXX-NP)
- **Gold** (Code: PBIB012-XXX-GL)
- **Nickel Matte** (Code: PBIB012-XXX-NM)
- **Antique Bronze** (Code: PBIB012-XXX-AB)
- **Oil-rubbed Bronze** (Code: PBIB012-XXX-OB)

prodigg

Painted exterior colour options:



WHI (White)



BLA (Black)



GRE (Grey)



GOL (Gold)

Bathtub feet colour options:



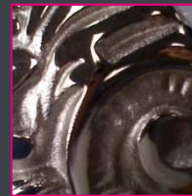
CH (Chrome)



WH (White)



BK (Black)



NP (Nickel polished)



GL (Gold)



NM (Nickel matte)



AB (Antique Bronze)



OB (Oil-rubbed bronze)

