

## Upmarket bathtub quality and design



# prodiggy

## HAMBURG 1450 FREE-STANDING BATHTUB

PBIB009-1450-XXX

- Appealing retro style design
- High quality fabrication
- Quality and endurance of materials

Retro style free-standing double ended bathtub with wooden feet. Material: enameled cast-iron bathtub. Thickness of the white porcelain enamel: 1.5-2.0mm (inside). Hand smoothed painted exterior. Dimensions: 1450\*780\*625mm. Weight: 135kg.

### Retro style free-standing double ended bathtub with wooden feet:

- White enamel thickness (inside): 1.5-2.0mm
- Total thickness: 8mm
- Wooden feet (oak)
- Hand smoothed painted exterior available in several colors.
- Dimensions: 1450\*780\*625mm.
- Weight: 135kg
- Capacity: 170 L

#### Remark:

-The tapware is not included.

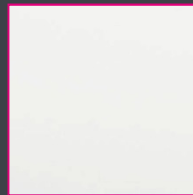
#### Painted exterior colour options:

**White** (Code: PBIB009-1450-WHI)

**Black** (Code: PBIB009-1450-BLA)

**Grey** (Code: PBIB009-1450-GRE)

**Gold** (Code: PBIB009-1450-GOL)



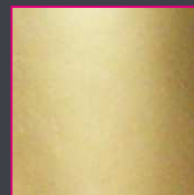
WHI (White)



BLA (Black)



GRE (Grey)



GOL (Gold)

