

## Upmarket bathtub quality and design



# prodig

## ZURICH FREE-STANDING BATHTUB

PBIB004-XXX

- Appealing retro style design
- High quality fabrication
- Quality and endurance of materials

Retro style free-standing double slipper bathtub with pedestal. Material: enameled cast-iron bathtub. Thickness of the white porcelain enamel: 1.5-2.0mm (inside). Hand smoothed painted exterior. Dimensions: 1800\*790\*650 mm. Tub Weight: 138kg. Pedestal Weight: 55kg.

### Retro style free-standing double slipper bathtub with pedestal:

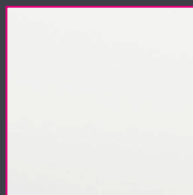
- White enamel thickness (inside): 1.5-2.0mm
- Total thickness: 8mm
- Hand smoothed painted exterior available in several colors.
- Cast iron pedestal (should be the same colour as the bathtub).
- Dimensions: 1800\*790\*650mm.
- Tub Weight: 138kg.
- Pedestal Weight: 55kg.
- Capacity: 225 L.

#### Remarks:

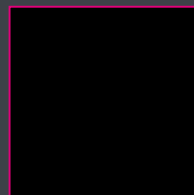
- The tapware is not included.
- The pedestal is pre-installed.
- Contrary to the picture, there is no pre-drilled tap hole.

### Painted exterior colour options:

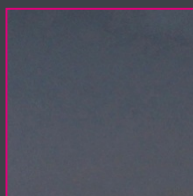
- **White** (Code: PBIB004-WHI)
- **Black** (Code: PBIB004-BLA)
- **Grey** (Code: PBIB004-GRE)
- **Gold** (Code: PBIB004-GOL)



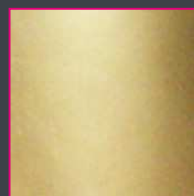
WHI (White)



BLA (Black)



GRE (Grey)



GOL (Gold)

